



## Application

- Can be used to transfer clean water or other liquids similar to water in physical and chemical properties
- Suitable for lifting water from the well, sprinkling irrigation in garden, pressure boosting of running water, and supporting equipment etc.

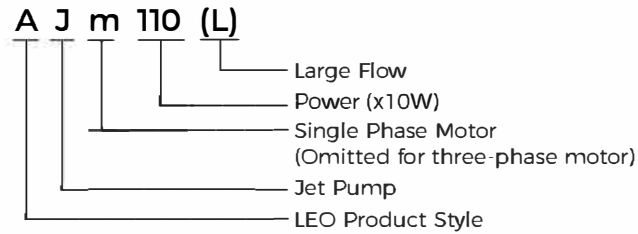
## Pump

- Cast iron pump body and support under special anti-rust treatment
- Stainless steel impeller
- AISI 304 shaft
- Max. liquid temperature: +60°C
- Max. suction: +9 m

## Motor

- Low noise&Long life bearing
- Motor with copper winding
- Built-in thermal protector for single phase motor
- Insulation class: F
- Protection class: IPX4
- Max.ambient temperature: +50 °C

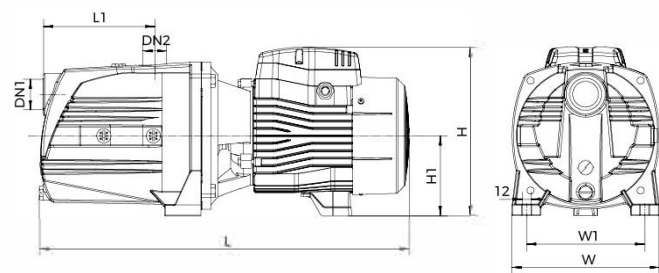
## Identification Codes



## Technical Data

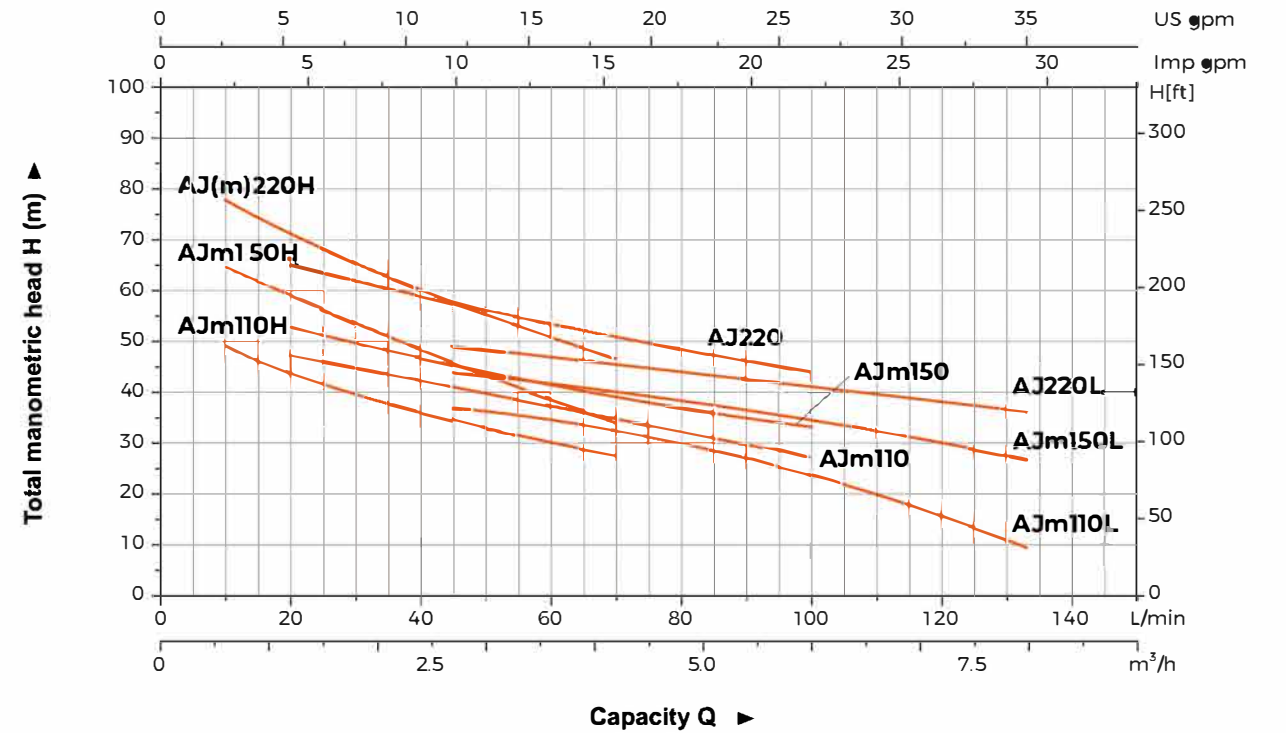
Model	Power		Q(m³/h)	Q(l/min)																
	kW	HP		0	0.6	0.9	1.2	1.5	1.8	2.1	2.4	2.7	3	3.6	4.2	4.8	6.0	7.5	8.4	
AJm110H	1.1	1.5	H (m)	60	50	46	44	42	40	38	36	34	32	30	28	-	-	-	-	
AJm150H	1.5	2		72	65	61	59	57	54	51	48	45	43	39	34	-	-	-	-	
AJ(m)220H	2.2	3		85	78	75	71	68	65	63	60	57.5	55	51.5	46	-	-	-	-	
AJm110	1.1	1.5		55	52	49	48	46	45	43	42	41	40	37	35	33	27	-	-	
AJm150	1.5	2		60	56	55	53	52	49	48	46	45	44	42	40	36	33	-	-	
AJ220	2.2	3		68	67.5	67	66	65	63	61	59	57	56	54	51	48	44	-	-	
AJm110L	1.1	1.5		47	45	44	43	42	41	40	39	38	36	34	32	30	24	17	9	
AJm150L	1.5	2		54	53	52	51	49	48	46	45	44	43	42	39	38	34	31	26	
AJ220L	2.2	3		55	54	53	52	51.5	51	50.5	49.5	49	48	47	45	44	41	38	36	

## Dimension



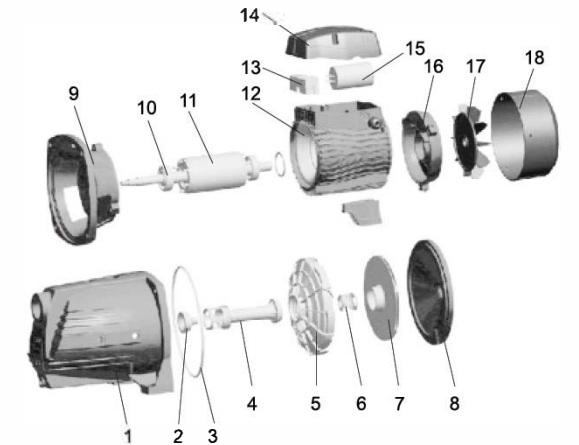
Model	DN1	DN2	L (mm)	W (mm)	H (mm)	L1 (mm)	W1 (mm)	H1 (mm)
AJm110H	1 1/4"	1 1/4"	512	206	236	153	165	112
AJm150H			512	206	236	153	165	112
AJ(m)220H			512	206	236	153	165	112
AJm110			512	206	236	153	165	112
AJm150			512	206	236	153	165	112
AJ220	1 1/2"	1 1/2"	512	206	236	153	165	112
AJm110L			512	206	236	153	165	112
AJm150L			512	206	236	153	165	112
AJ220L			512	206	236	153	165	112

## Hydraulic Performance Curves



## Materials Table

No.	Part	Material	No.	Part	Material
1	Pump body	HT 200	13	Terminal board	PC
2	Nozzle	PPO	14	Terminal box	PA6-GF25
3	O-ring	NBR	15	Capacitor	
4	Venturi tube	PPO	16	Rear cover	ZL102
5	Diffuser	PPO	17	Fan	PP
6	Mechanical seal	Carbon/Ceramic	18	Fan cover	PP
7	Impeller	AISI 304			
8	Support cover	HT200			
9	Support	ZL102			
10	Bearing				
11	Rotor				
12	Stator				



## Package Information

Model	GW (Kgs)	L (mm)	W (mm)	H (mm)	Quantity (PCS/20'TEU)
AJm110	24.5	572	225	259	816
AJm110H	24.5	572	225	259	816
AJm110L	24.5	572	225	259	816
AJm150	25.4	572	225	259	816
AJm150H	25.4	572	225	259	816
AJm150L	25.4	572	225	259	816
AJ(m)220H	26.0	572	225	259	816

